



Planning For EV Charging Stations

NH Local Energy Solutions

November 2019



Kevin Arritt

Clean Energy Strategy & Policy

Eversource: Who We Are

We Serve:

- 4 million electric, water, and gas customers
- Service territory in 3 states
- Roughly 48% of New England

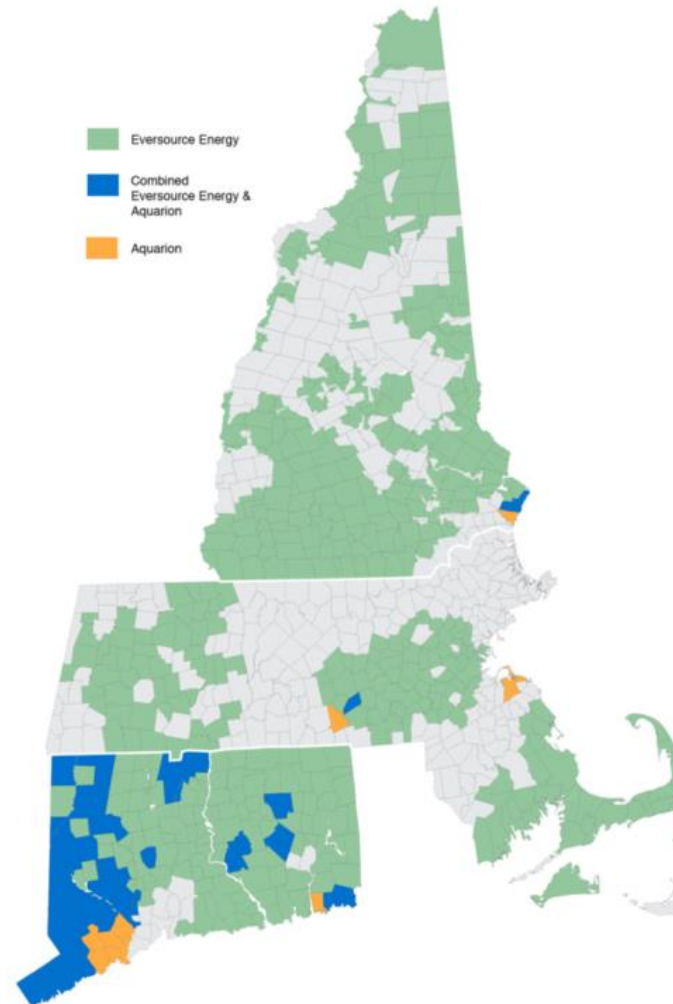
We Deliver:

- Energy: 52 TWh/yr
- Gas: 101 bcf/yr
- Water: 131 M gal/day
- Rev: \$8.45 B
- Net Income: \$1.03 B

We Own & Operate:

- \$23.6 B of assets
- 4,400 miles of transmission
- 58,000 miles of distribution
- 6,600 miles of gas pipeline
- 3,600 miles of water mains
- 70 MW of solar

EVERSOURCE



Source: Eversource 2018 Annual Report and 10K

Everyone Has A Role To Play

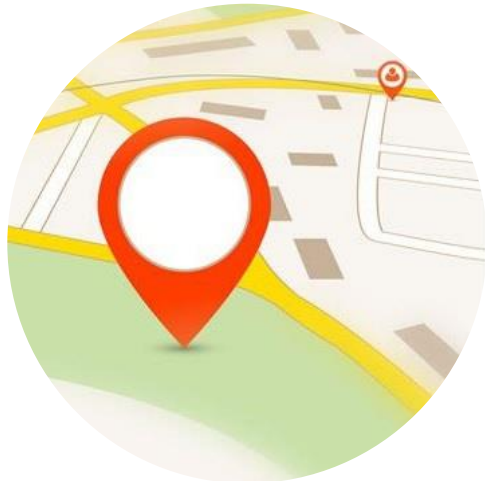


- 1. Utilities** perform electrical infrastructure work from the distribution system service drop up to the meter
- 2. Electricians** hired by the property owner to provide service from the meter up to the charging station
- 3. Network of charging station vendors, resellers and installers** provide the charging station hardware & software, including installation of the equipment

What Is Eversource Doing In The NH EV Space?

- Eversource has proposed a public-private partnership to create an EV fast charging corridor across New Hampshire's major roadways
- The proposal leverages the availability of VW Settlement Funds earmarked for EV charging infrastructure
- This EV fast charging corridor will:
 - promote New Hampshire travel and tourism
 - support commuters and drivers who choose to drive electric
- Program was developed jointly with Liberty, Unitil and the New Hampshire Electric Cooperative
- Eversource will implement "make-ready" model, however other utilities may choose different approach
- New Hampshire Office of Strategic Initiatives and Department of Environmental Services are currently drafting an RFP that will serve as the application for interested site hosts

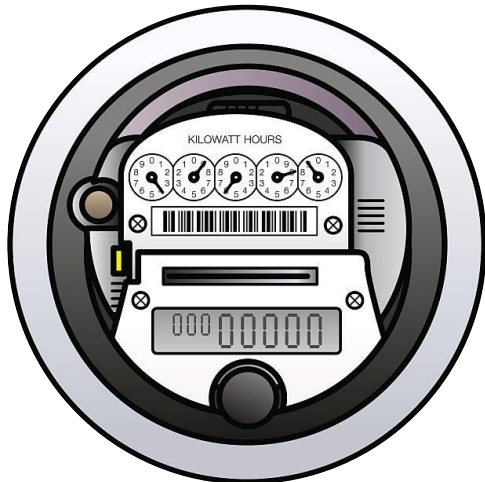
Practical Considerations For Aspiring Site Hosts



Location Matters



Future - Proofing



Separately Metering



Bill Impacts

Helpful Insights Into Permitting

- Location concerns
 - Is an easement necessary?
 - Would infrastructure be in a public way?
- Environmental review
 - Wetlands?
 - Buffer area?
 - Other protected area?
- Town-specific issues
 - Historical area?
 - Zoning concerns?



Questions?



Kevin Arritt

Clean Energy Strategy & Policy

Kevin.Arritt@eversource.com